



SQUAMISH

Official Community Plan

Schedule D-1

Flood & Debris Flow Hazard Areas

DRAFT

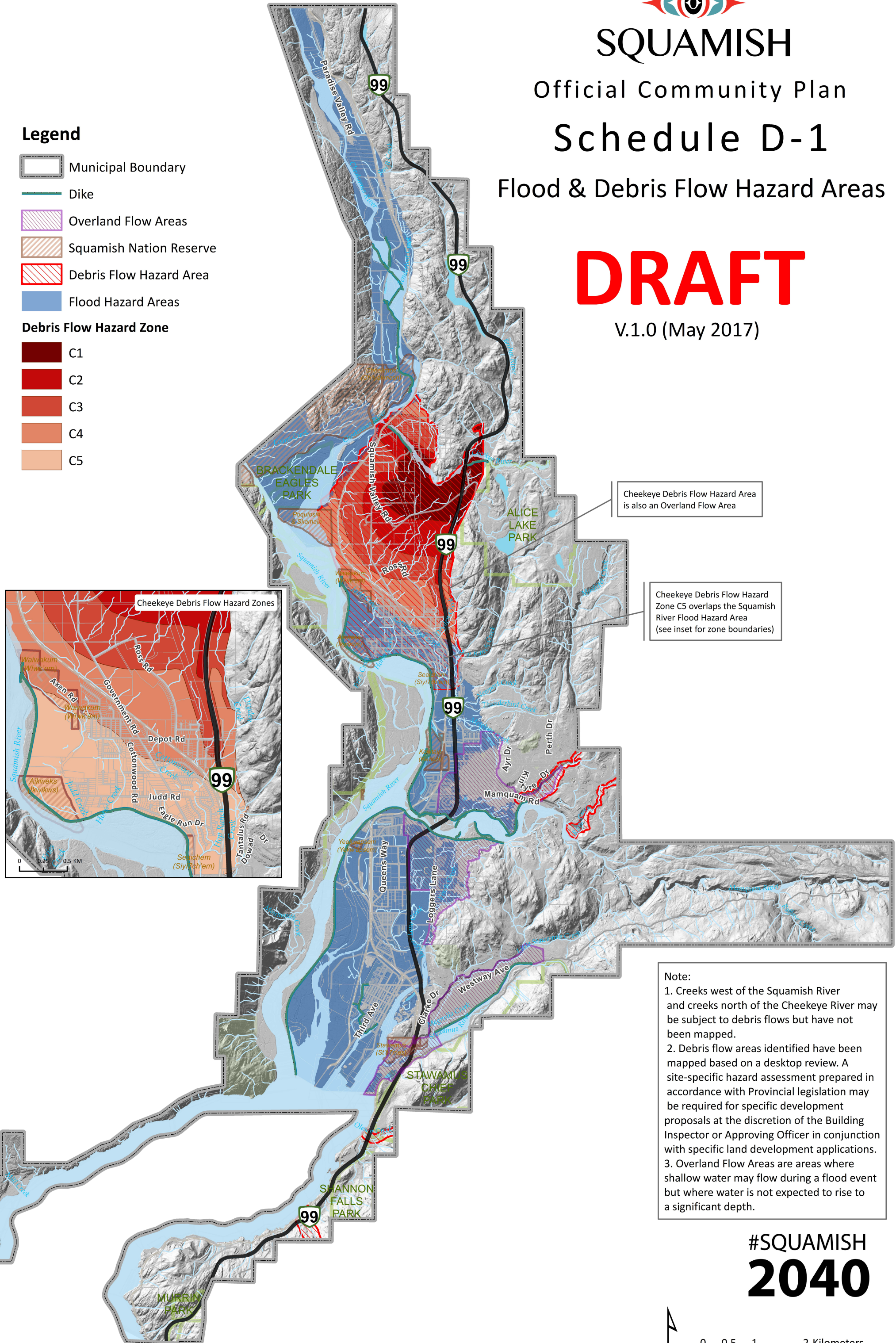
V.1.0 (May 2017)

Legend

- Municipal Boundary
- Dike
- Overland Flow Areas
- Squamish Nation Reserve
- Debris Flow Hazard Area
- Flood Hazard Areas

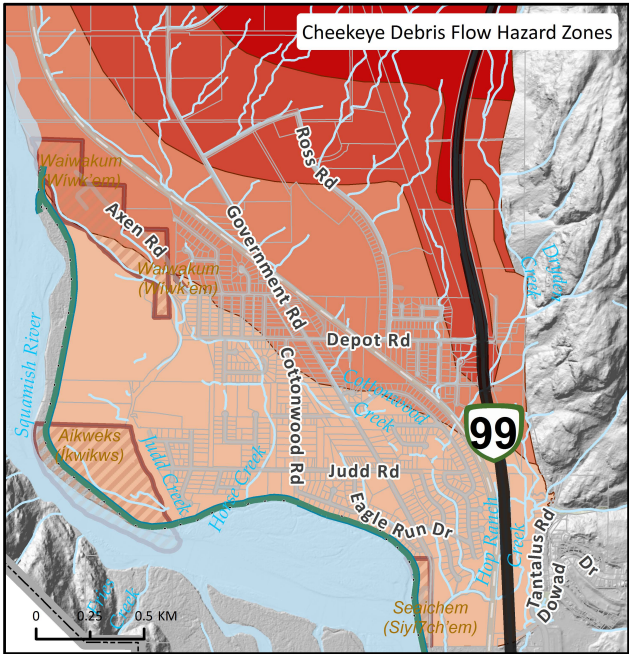
Debris Flow Hazard Zone

- C1
- C2
- C3
- C4
- C5



Cheekeye Debris Flow Hazard Area is also an Overland Flow Area

Cheekeye Debris Flow Hazard Zone C5 overlaps the Squamish River Flood Hazard Area (see inset for zone boundaries)



Note:

1. Creeks west of the Squamish River and creeks north of the Cheekeye River may be subject to debris flows but have not been mapped.
2. Debris flow areas identified have been mapped based on a desktop review. A site-specific hazard assessment prepared in accordance with Provincial legislation may be required for specific development proposals at the discretion of the Building Inspector or Approving Officer in conjunction with specific land development applications.
3. Overland Flow Areas are areas where shallow water may flow during a flood event but where water is not expected to rise to a significant depth.

#SQUAMISH
2040

