

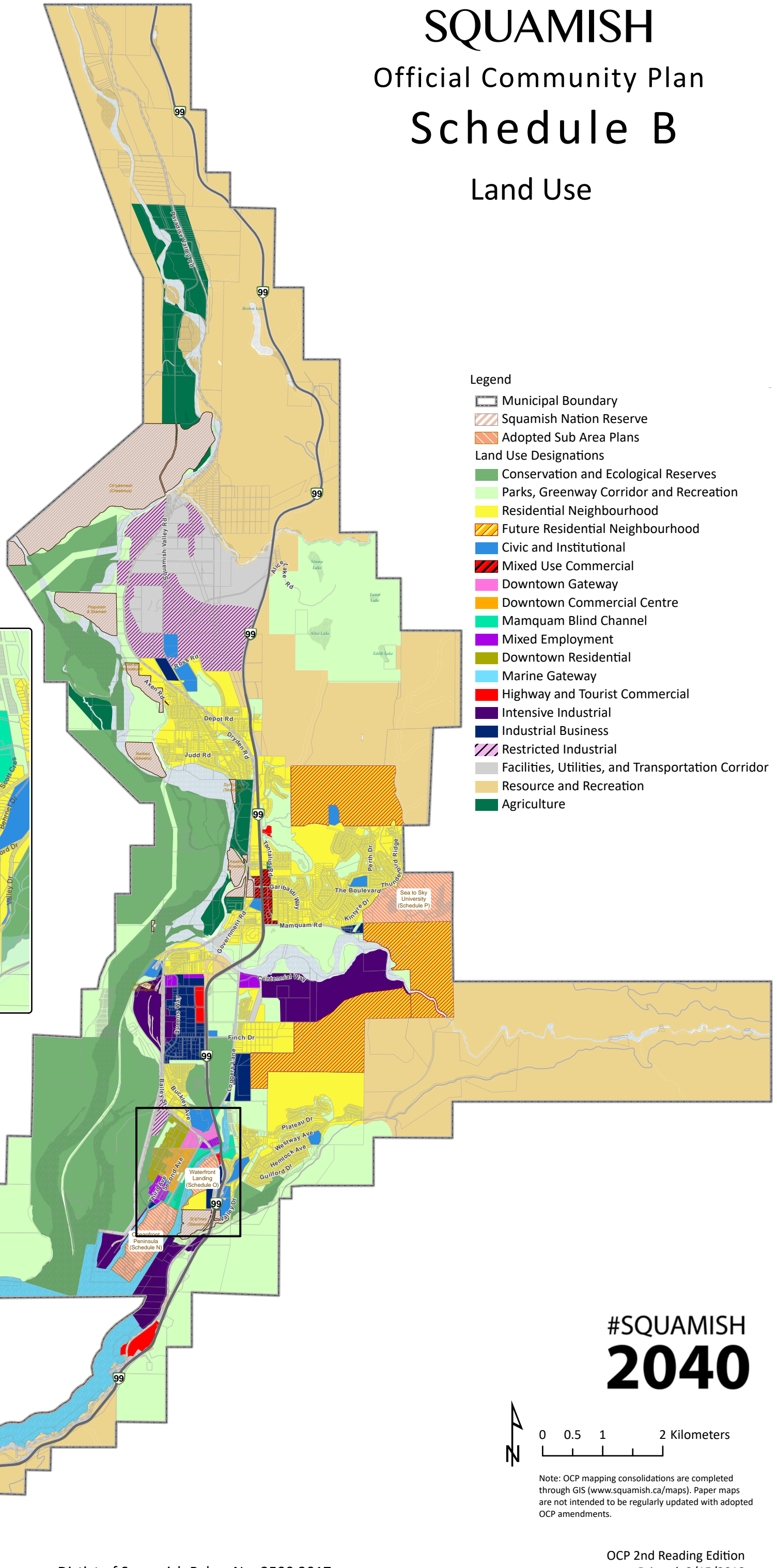
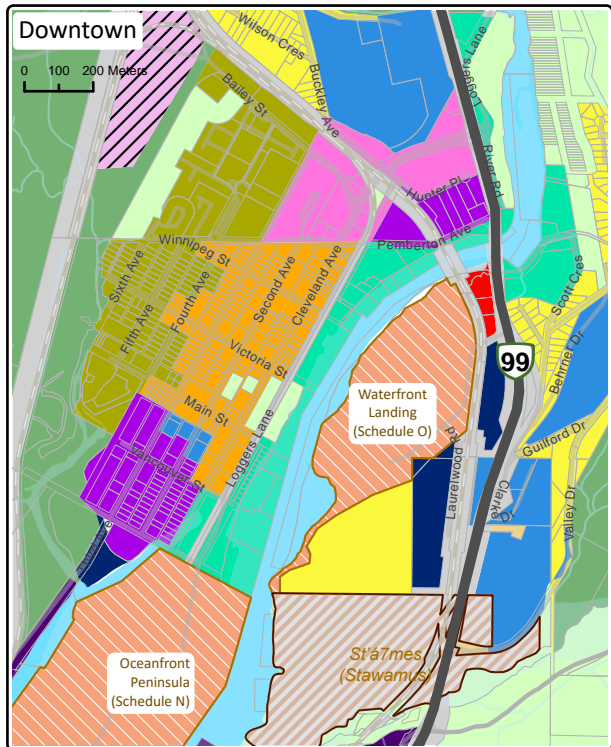


# SQUAMISH

Official Community Plan

## Schedule B

### Land Use



#### Legend

- Municipal Boundary
- Squamish Nation Reserve
- Adopted Sub Area Plans
- Land Use Designations**
- Conservation and Ecological Reserves
- Parks, Greenway Corridor and Recreation
- Residential Neighbourhood
- Future Residential Neighbourhood
- Civic and Institutional
- Mixed Use Commercial
- Downtown Gateway
- Downtown Commercial Centre
- Mamquam Blind Channel
- Mixed Employment
- Downtown Residential
- Marine Gateway
- Highway and Tourist Commercial
- Intensive Industrial
- Industrial Business
- Restricted Industrial
- Facilities, Utilities, and Transportation Corridor
- Resource and Recreation
- Agriculture

# #SQUAMISH 2040



Note: OCP mapping consolidations are completed through GIS ([www.squamish.ca/maps](http://www.squamish.ca/maps)). Paper maps are not intended to be regularly updated with adopted OCP amendments.

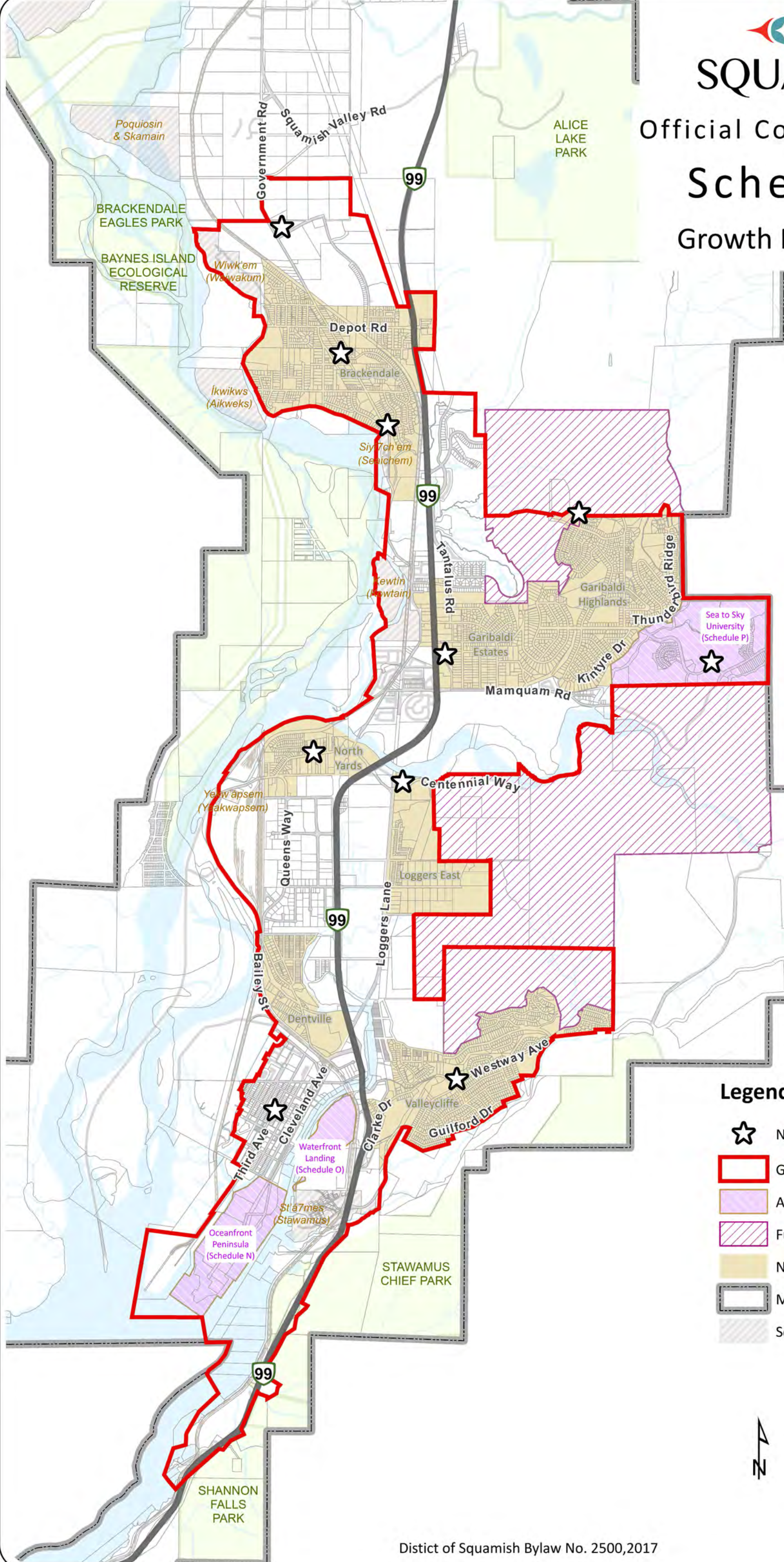


# SQUAMISH

Official Community Plan

## Schedule C

Growth Management



### Legend

- Neighbourhood Nodes
- Growth Management Boundary
- Adopted Sub Area Plans
- Future Sub Area Plans
- Neighbourhood Planning Areas
- Municipal Boundary
- Squamish Nation Reserves

# #SQUAMISH 2040



0 0.25 0.5 1 Kilometers

Note: OCP mapping consolidations are completed through GIS ([www.squamish.ca/maps](http://www.squamish.ca/maps)). Paper maps are not intended to be regularly updated with adopted OCP amendments.



# SQUAMISH

Official Community Plan

## Schedule D-1

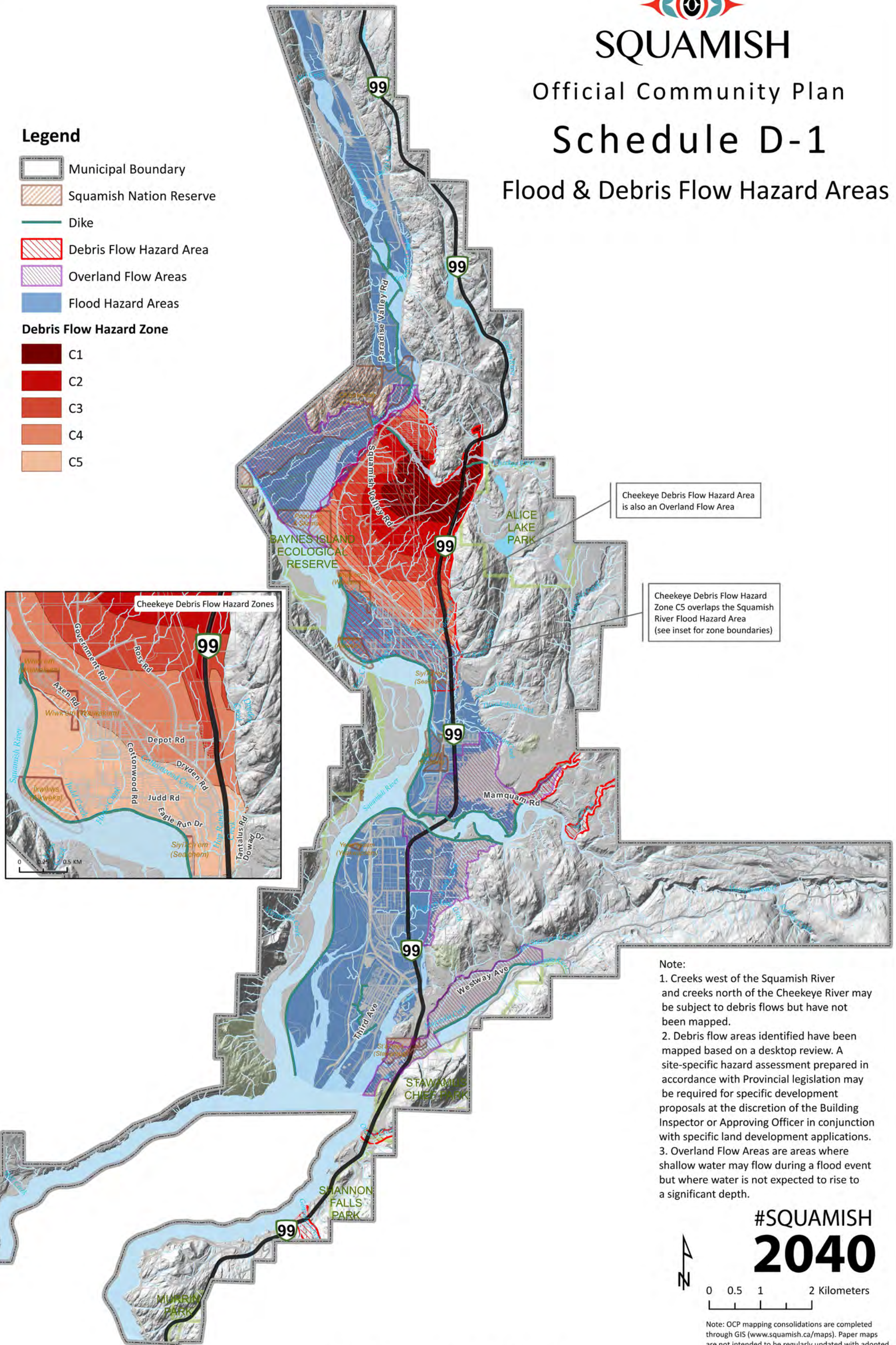
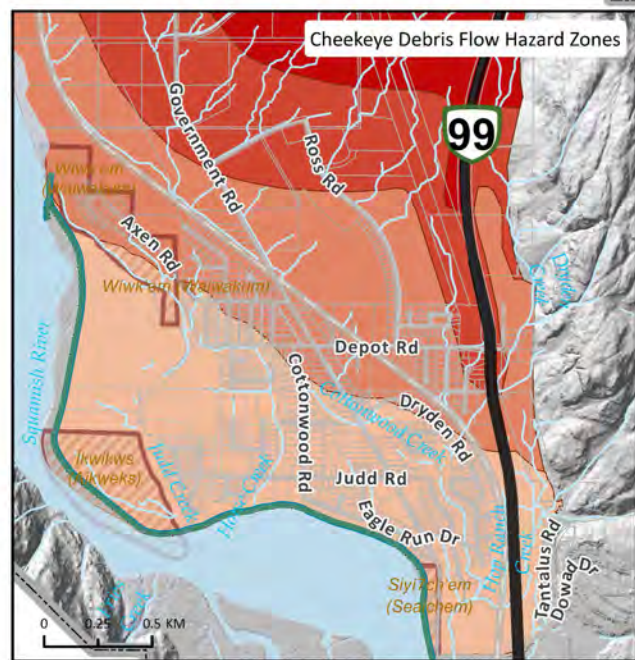
### Flood & Debris Flow Hazard Areas

#### Legend

- Municipal Boundary
- Squamish Nation Reserve
- Dike
- Debris Flow Hazard Area
- Overland Flow Areas
- Flood Hazard Areas

#### Debris Flow Hazard Zone

- C1
- C2
- C3
- C4
- C5



Cheekeye Debris Flow Hazard Area is also an Overland Flow Area

Cheekeye Debris Flow Hazard Zone C5 overlaps the Squamish River Flood Hazard Area (see inset for zone boundaries)

#### Note:

1. Creeks west of the Squamish River and creeks north of the Cheekeye River may be subject to debris flows but have not been mapped.
2. Debris flow areas identified have been mapped based on a desktop review. A site-specific hazard assessment prepared in accordance with Provincial legislation may be required for specific development proposals at the discretion of the Building Inspector or Approving Officer in conjunction with specific land development applications.
3. Overland Flow Areas are areas where shallow water may flow during a flood event but where water is not expected to rise to a significant depth.

#SQUAMISH  
**2040**



0 0.5 1 2 Kilometers

Note: OCP mapping consolidations are completed through GIS ([www.squamish.ca/maps](http://www.squamish.ca/maps)). Paper maps are not intended to be regularly updated with adopted OCP amendments.



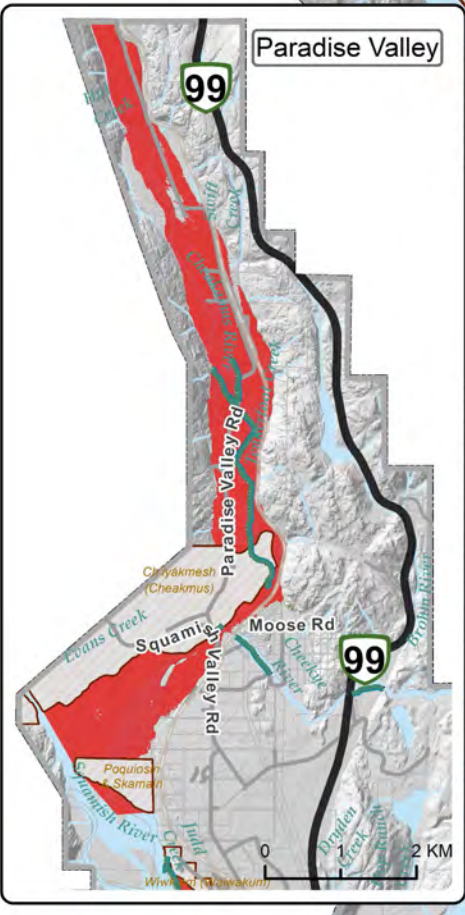
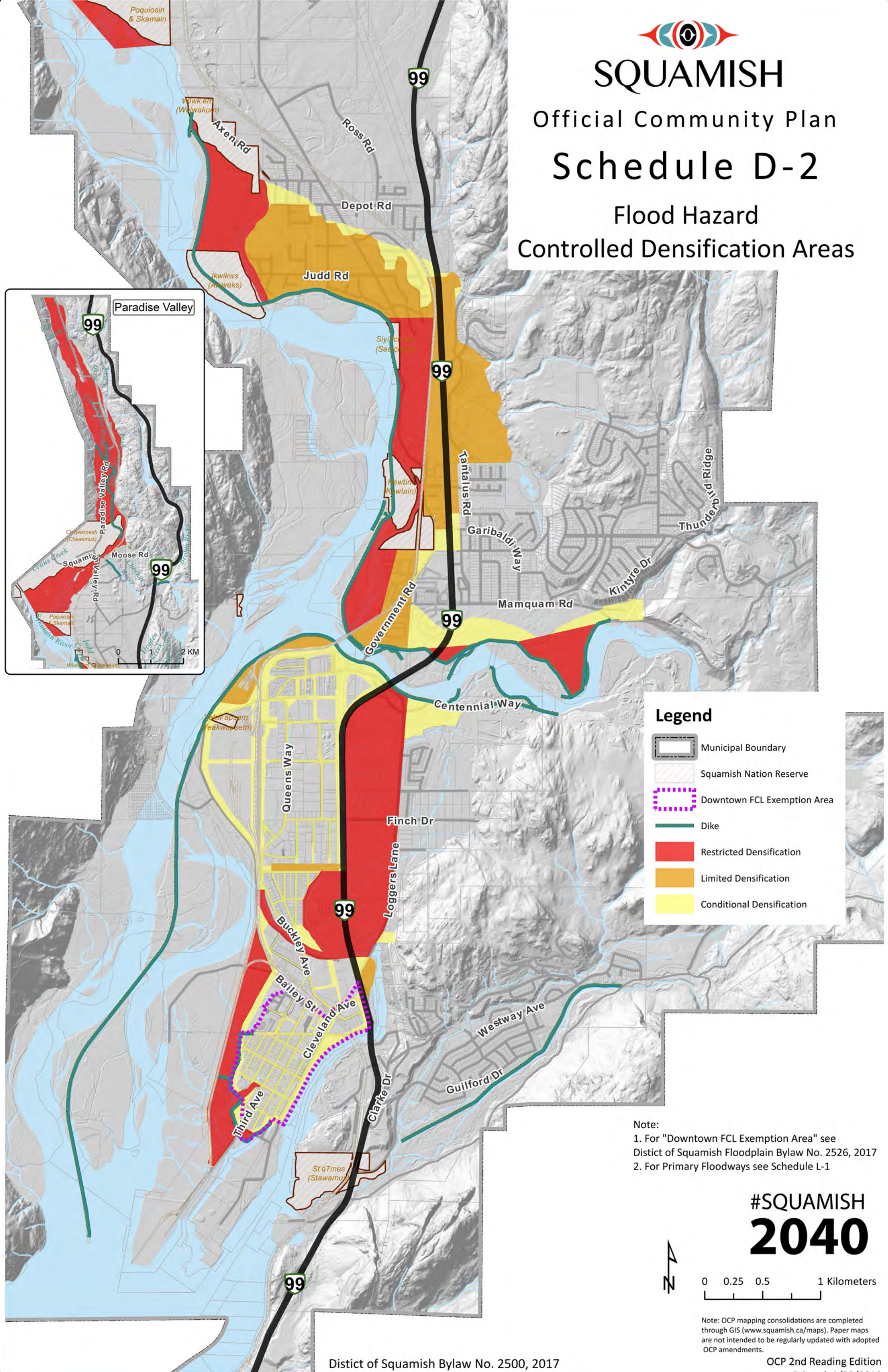
# SQUAMISH

Official Community Plan

## Schedule D-2

Flood Hazard

Controlled Densification Areas

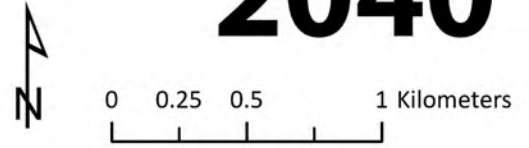


### Legend

- Municipal Boundary
- Squamish Nation Reserve
- Downtown FCL Exemption Area
- Dike
- Restricted Densification
- Limited Densification
- Conditional Densification

Note:  
 1. For "Downtown FCL Exemption Area" see Distict of Squamish Floodplain Bylaw No. 2526, 2017  
 2. For Primary Floodways see Schedule L-1

#SQUAMISH  
**2040**



Note: OCP mapping consolidations are completed through GIS ([www.squamish.ca/maps](http://www.squamish.ca/maps)). Paper maps are not intended to be regularly updated with adopted OCP amendments.




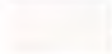





# SQUAMISH

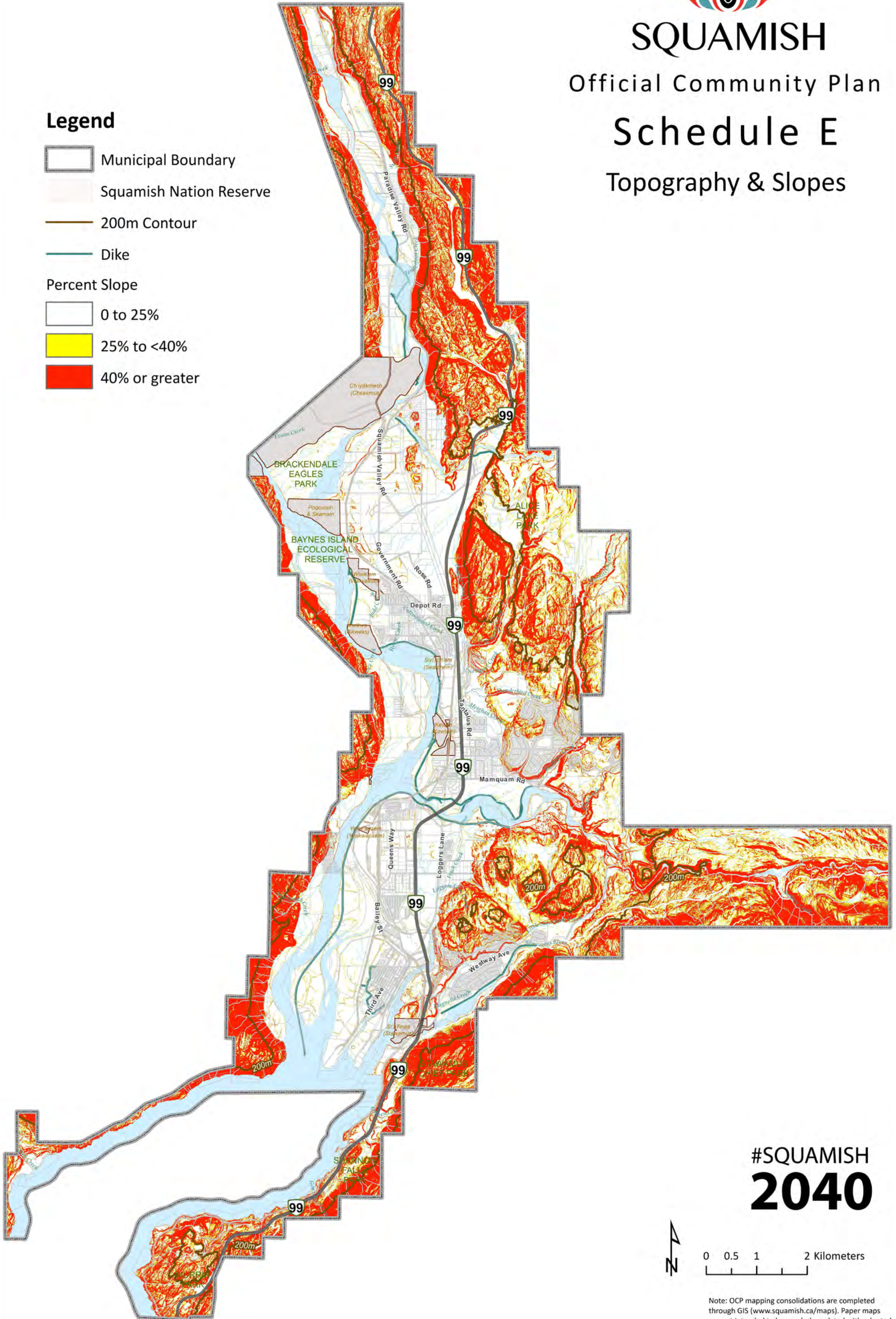
Official Community Plan

## Schedule E

### Topography & Slopes

#### Legend

-  Municipal Boundary
  -  Squamish Nation Reserve
  -  200m Contour
  -  Dike
- Percent Slope
-  0 to 25%
  -  25% to <40%
  -  40% or greater



# #SQUAMISH 2040



0 0.5 1 2 Kilometers

Note: OCP mapping consolidations are completed through GIS ([www.squamish.ca/maps](http://www.squamish.ca/maps)). Paper maps are not intended to be regularly updated with adopted OCP amendments.



# SQUAMISH

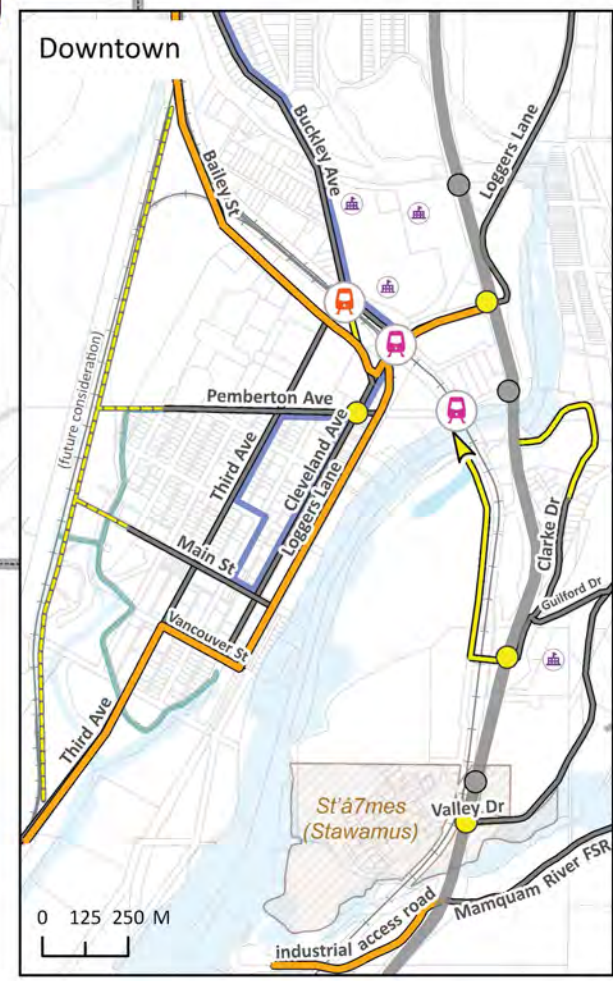
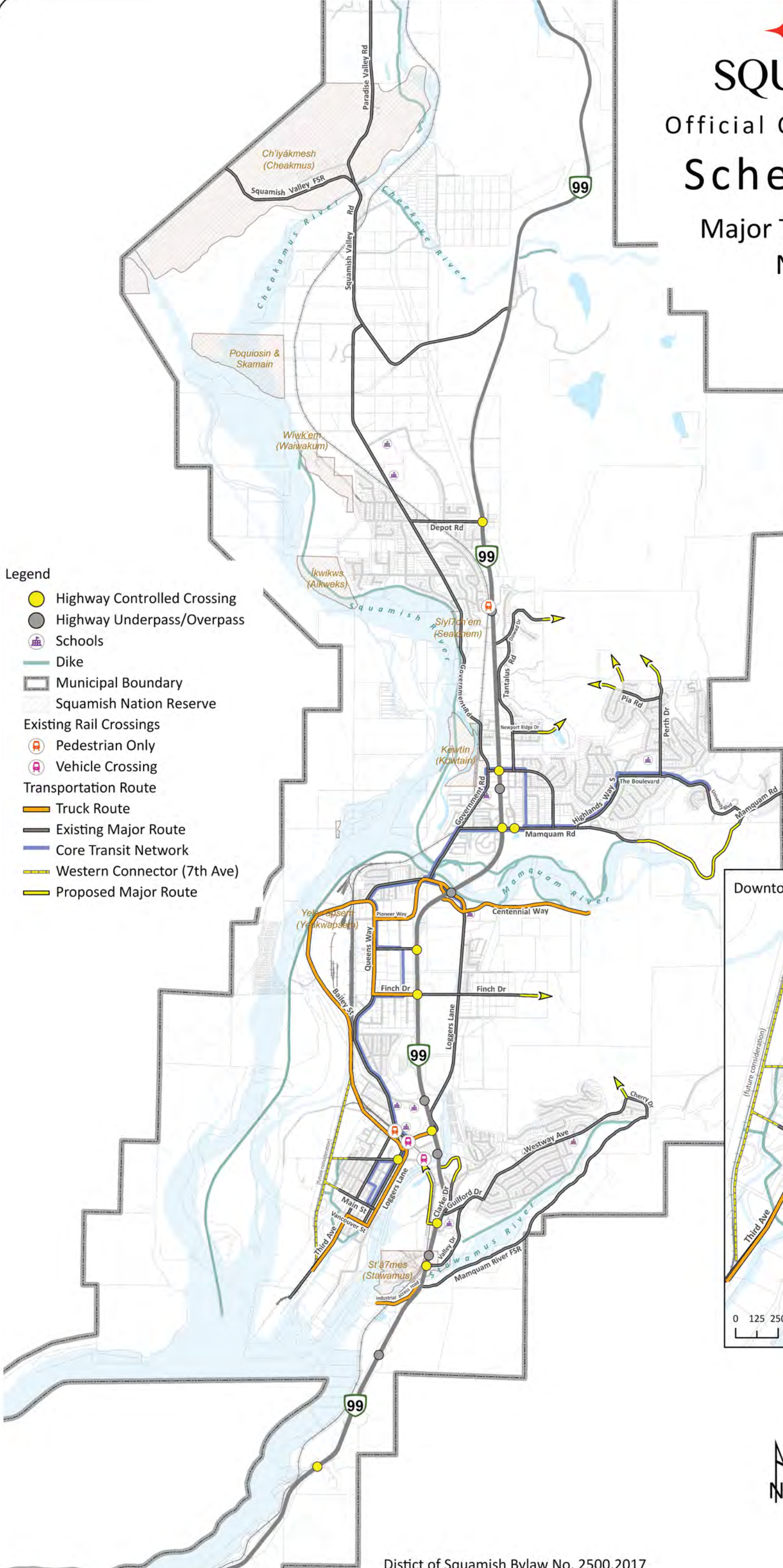
Official Community Plan

## Schedule F-1

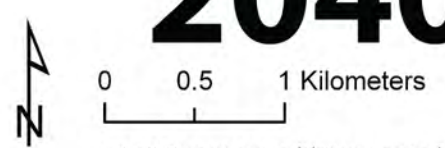
### Major Transportation Network

#### Legend

- Highway Controlled Crossing
- Highway Underpass/Overpass
- Schools
- Dike
- Municipal Boundary
- Squamish Nation Reserve
- Existing Rail Crossings**
- Pedestrian Only
- Vehicle Crossing
- Transportation Route**
- Truck Route
- Existing Major Route
- Core Transit Network
- Western Connector (7th Ave)
- Proposed Major Route



# #SQUAMISH 2040



Note: OCP mapping consolidations are completed through GIS ([www.squamish.ca/maps](http://www.squamish.ca/maps)). Paper maps are not intended to be regularly updated with adopted OCP amendments.



# SQUAMISH

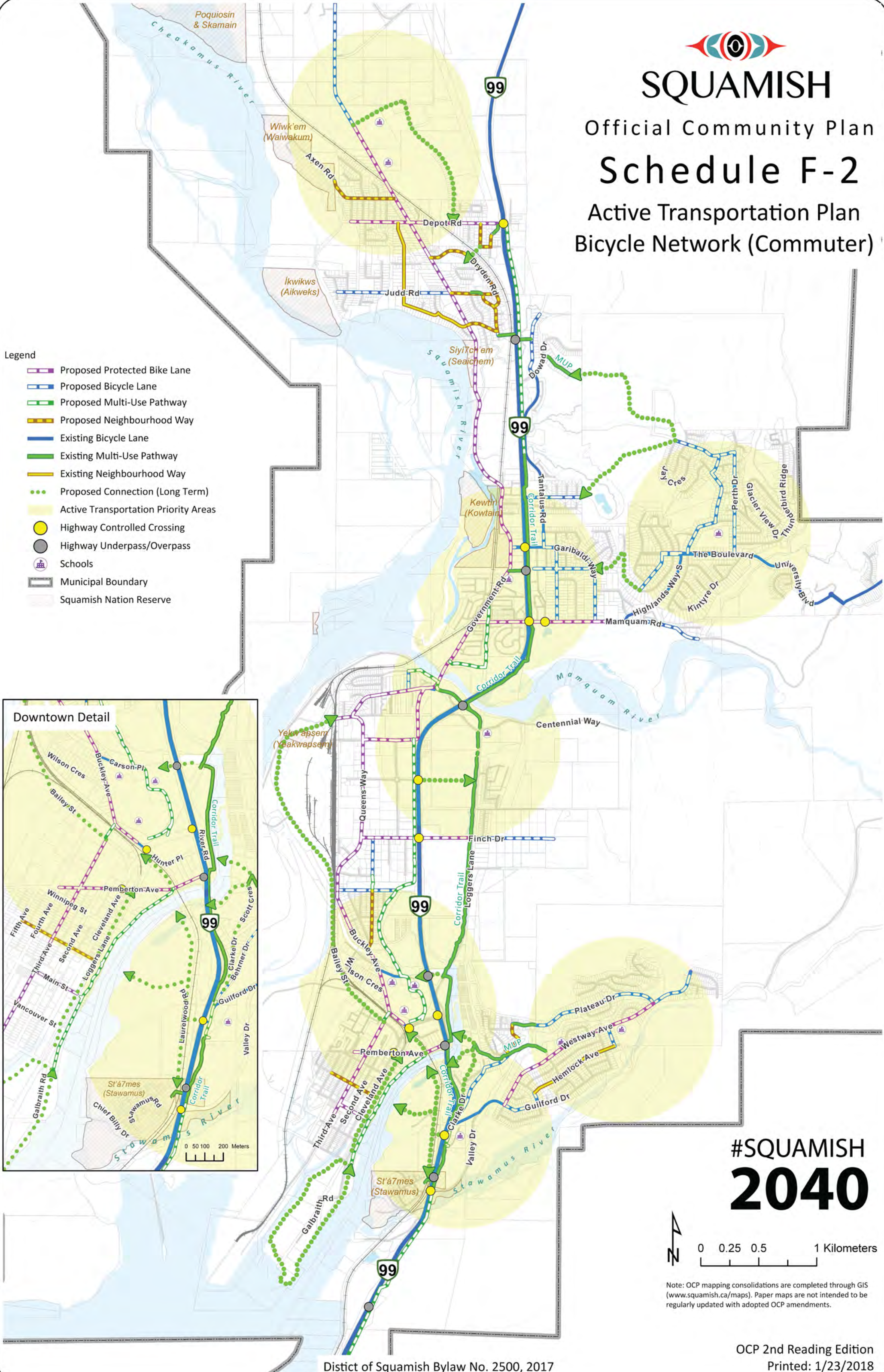
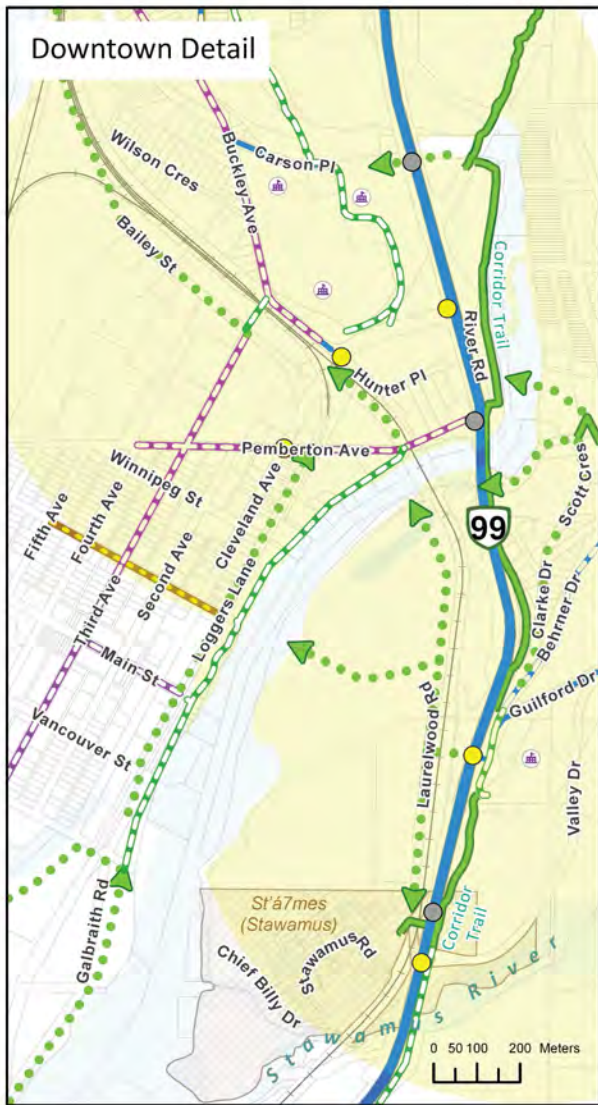
Official Community Plan

## Schedule F-2

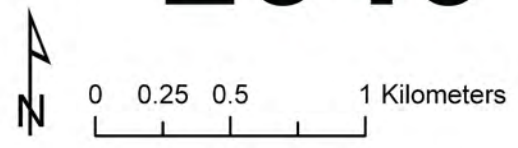
Active Transportation Plan  
Bicycle Network (Commuter)

### Legend

- Proposed Protected Bike Lane
- Proposed Bicycle Lane
- Proposed Multi-Use Pathway
- Proposed Neighbourhood Way
- Existing Bicycle Lane
- Existing Multi-Use Pathway
- Existing Neighbourhood Way
- Proposed Connection (Long Term)
- Active Transportation Priority Areas
- Highway Controlled Crossing
- Highway Underpass/Overpass
- Schools
- Municipal Boundary
- Squamish Nation Reserve



# #SQUAMISH 2040



Note: OCP mapping consolidations are completed through GIS ([www.squamish.ca/maps](http://www.squamish.ca/maps)). Paper maps are not intended to be regularly updated with adopted OCP amendments.



# SQUAMISH

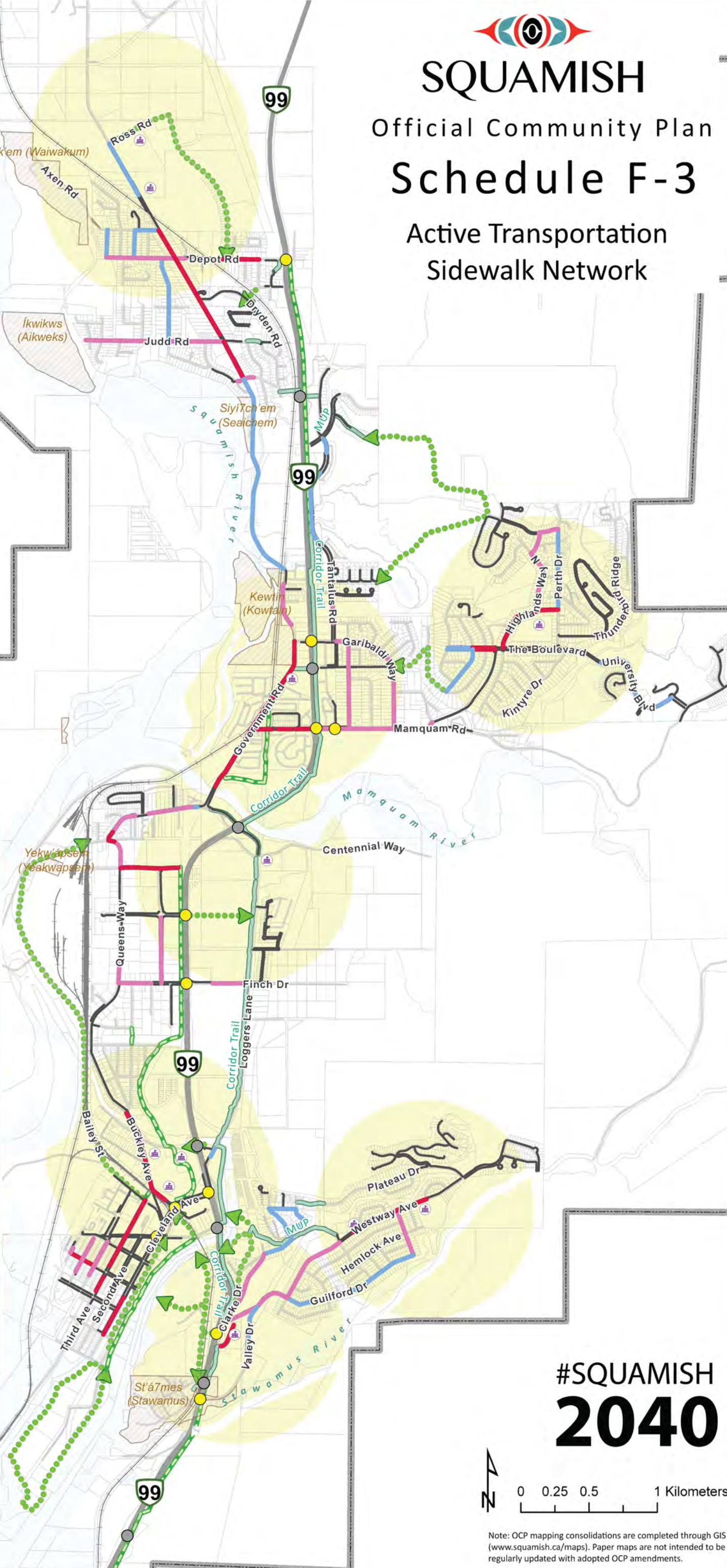
Official Community Plan

## Schedule F-3

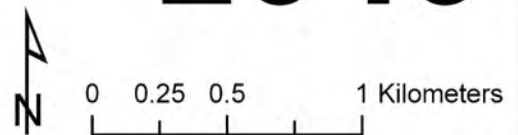
### Active Transportation Sidewalk Network

#### Legend

- Schools
- Highway Controlled Crossing
- Highway Underpass/Overpass
- Sidewalks
- Proposed Multi-Use Pathway
- Proposed Connection (Long Term)
- Existing Multi-Use Pathway
- Active Transportation Priority Areas
- Municipal Boundary
- Squamish Nation Reserve
- Sidewalk Priority Rank**
- Short
- Medium
- Long



# #SQUAMISH 2040



Note: OCP mapping consolidations are completed through GIS ([www.squamish.ca/maps](http://www.squamish.ca/maps)). Paper maps are not intended to be regularly updated with adopted OCP amendments.





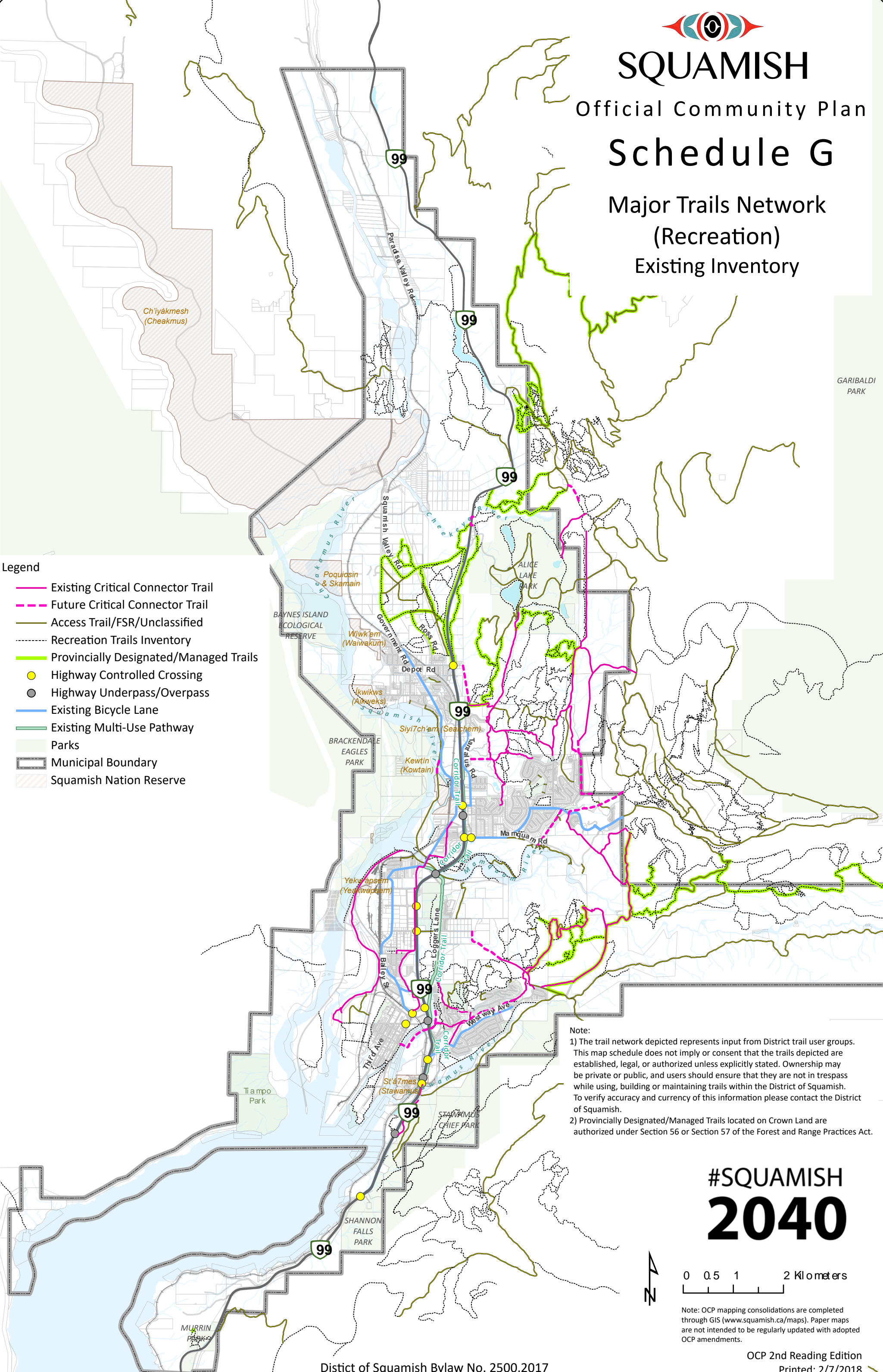
# SQUAMISH

Official Community Plan

## Schedule G

### Major Trails Network (Recreation)

### Existing Inventory



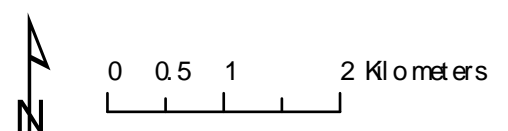
#### Legend

- Existing Critical Connector Trail
- - - Future Critical Connector Trail
- Access Trail/FSR/Unclassified
- - - - Recreation Trails Inventory
- Provincially Designated/Managed Trails
- Highway Controlled Crossing
- Highway Underpass/Overpass
- Existing Bicycle Lane
- Existing Multi-Use Pathway
- Parks
- Municipal Boundary
- Squamish Nation Reserve

**Note:**

- 1) The trail network depicted represents input from District trail user groups. This map schedule does not imply or consent that the trails depicted are established, legal, or authorized unless explicitly stated. Ownership may be private or public, and users should ensure that they are not in trespass while using, building or maintaining trails within the District of Squamish. To verify accuracy and currency of this information please contact the District of Squamish.
- 2) Provincially Designated/Managed Trails located on Crown Land are authorized under Section 56 or Section 57 of the Forest and Range Practices Act.

# #SQUAMISH 2040



Note: OCP mapping consolidations are completed through GIS ([www.squamish.ca/maps](http://www.squamish.ca/maps)). Paper maps are not intended to be regularly updated with adopted OCP amendments.

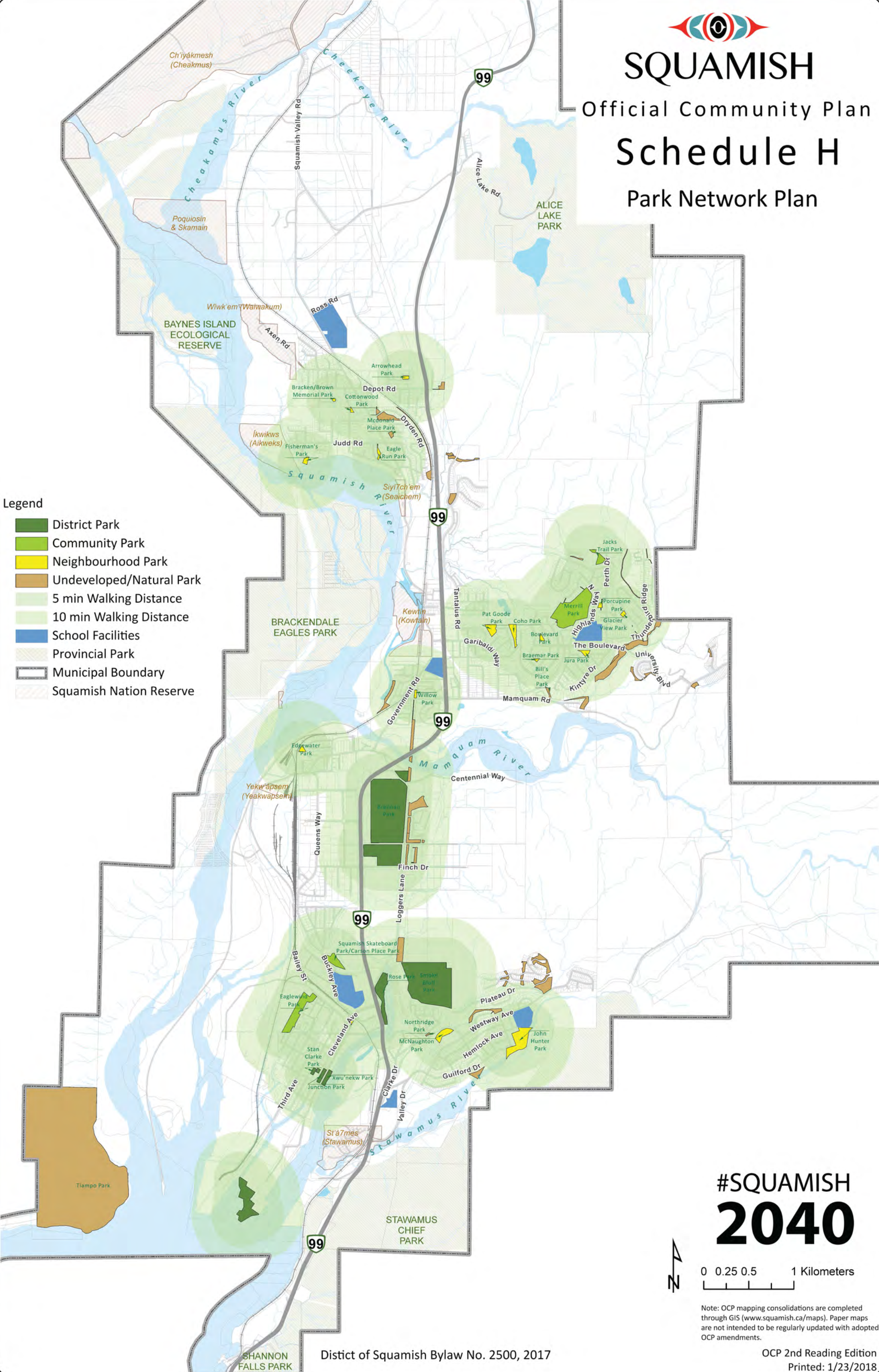


# SQUAMISH

Official Community Plan

## Schedule H

### Park Network Plan



#### Legend

- District Park
- Community Park
- Neighbourhood Park
- Undeveloped/Natural Park
- 5 min Walking Distance
- 10 min Walking Distance
- School Facilities
- Provincial Park
- Municipal Boundary
- Squamish Nation Reserve

# #SQUAMISH 2040



0 0.25 0.5 1 Kilometers

Note: OCP mapping consolidations are completed through GIS ([www.squamish.ca/maps](http://www.squamish.ca/maps)). Paper maps are not intended to be regularly updated with adopted OCP amendments.




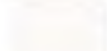
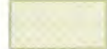



# SQUAMISH

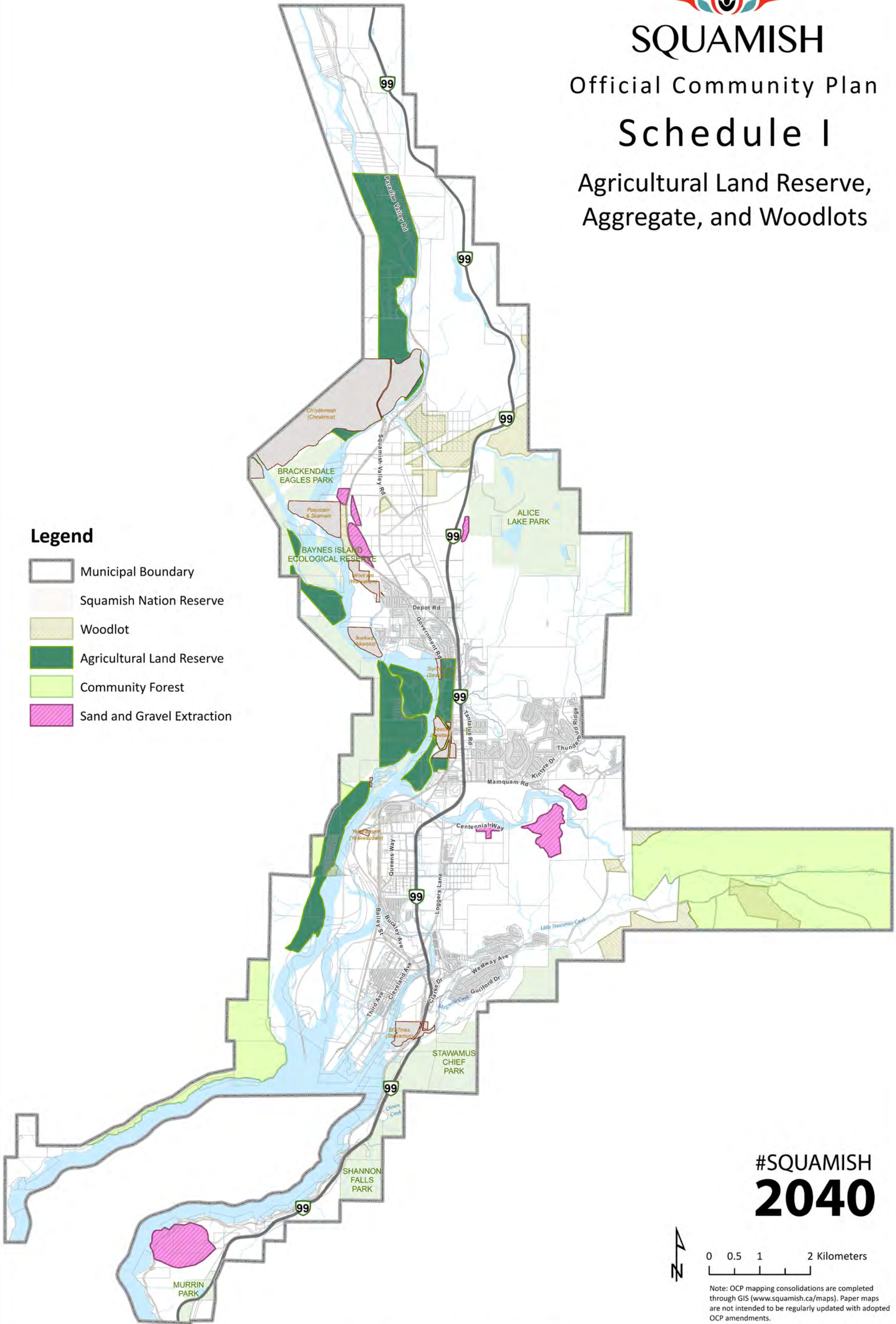
Official Community Plan

## Schedule I

Agricultural Land Reserve, Aggregate, and Woodlots

### Legend

-  Municipal Boundary
-  Squamish Nation Reserve
-  Woodlot
-  Agricultural Land Reserve
-  Community Forest
-  Sand and Gravel Extraction



# #SQUAMISH 2040



0 0.5 1 2 Kilometers

Note: OCP mapping consolidations are completed through GIS ([www.squamish.ca/maps](http://www.squamish.ca/maps)). Paper maps are not intended to be regularly updated with adopted OCP amendments.



# SQUAMISH

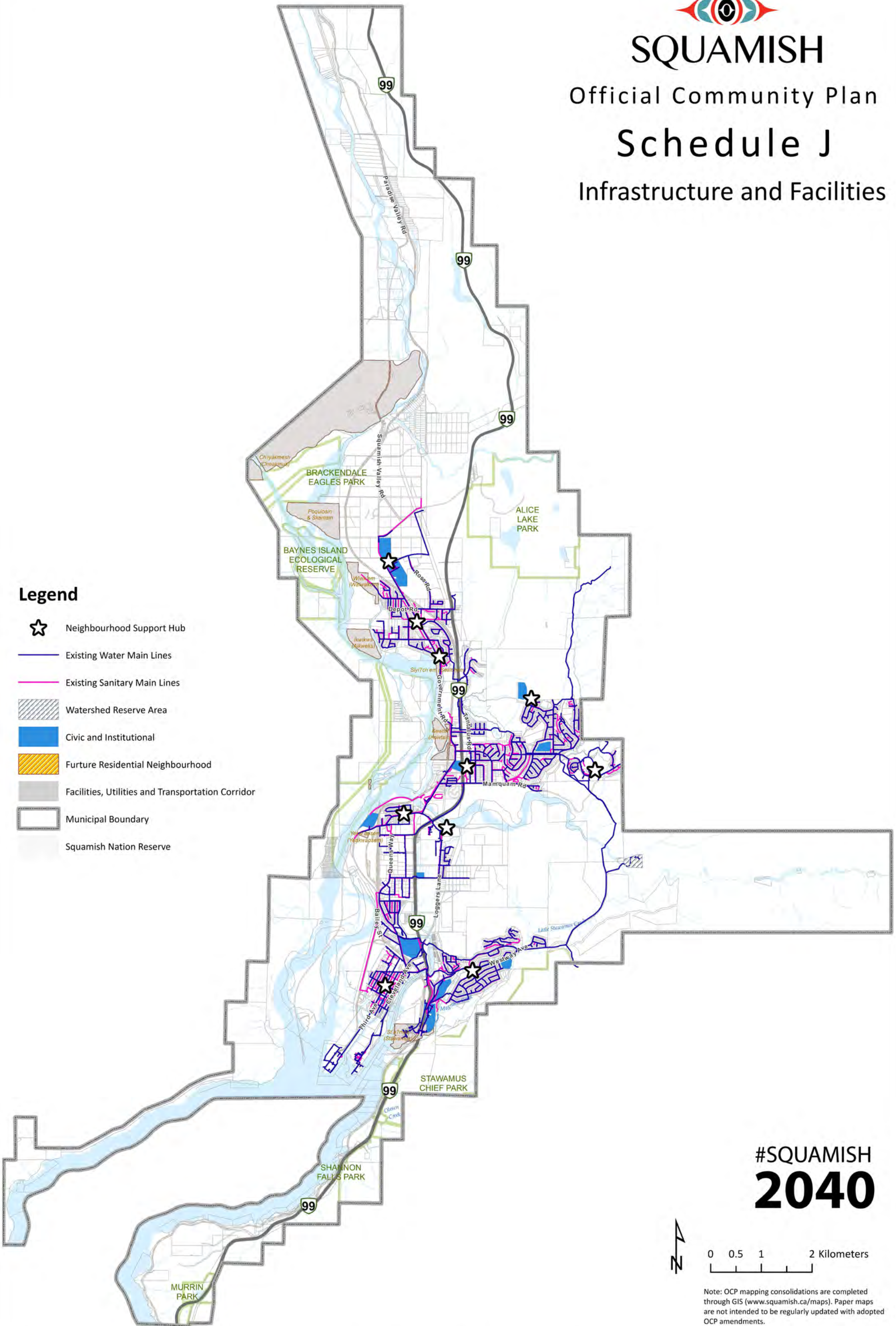
Official Community Plan

## Schedule J

Infrastructure and Facilities

### Legend

-  Neighbourhood Support Hub
-  Existing Water Main Lines
-  Existing Sanitary Main Lines
-  Watershed Reserve Area
-  Civic and Institutional
-  Future Residential Neighbourhood
-  Facilities, Utilities and Transportation Corridor
-  Municipal Boundary
-  Squamish Nation Reserve



# #SQUAMISH 2040



0 0.5 1 2 Kilometers

Note: OCP mapping consolidations are completed through GIS ([www.squamish.ca/maps](http://www.squamish.ca/maps)). Paper maps are not intended to be regularly updated with adopted OCP amendments.





# SQUAMISH

Official Community Plan




## Schedule K-1

### DPA1: Environmental Review Areas

#### Legend

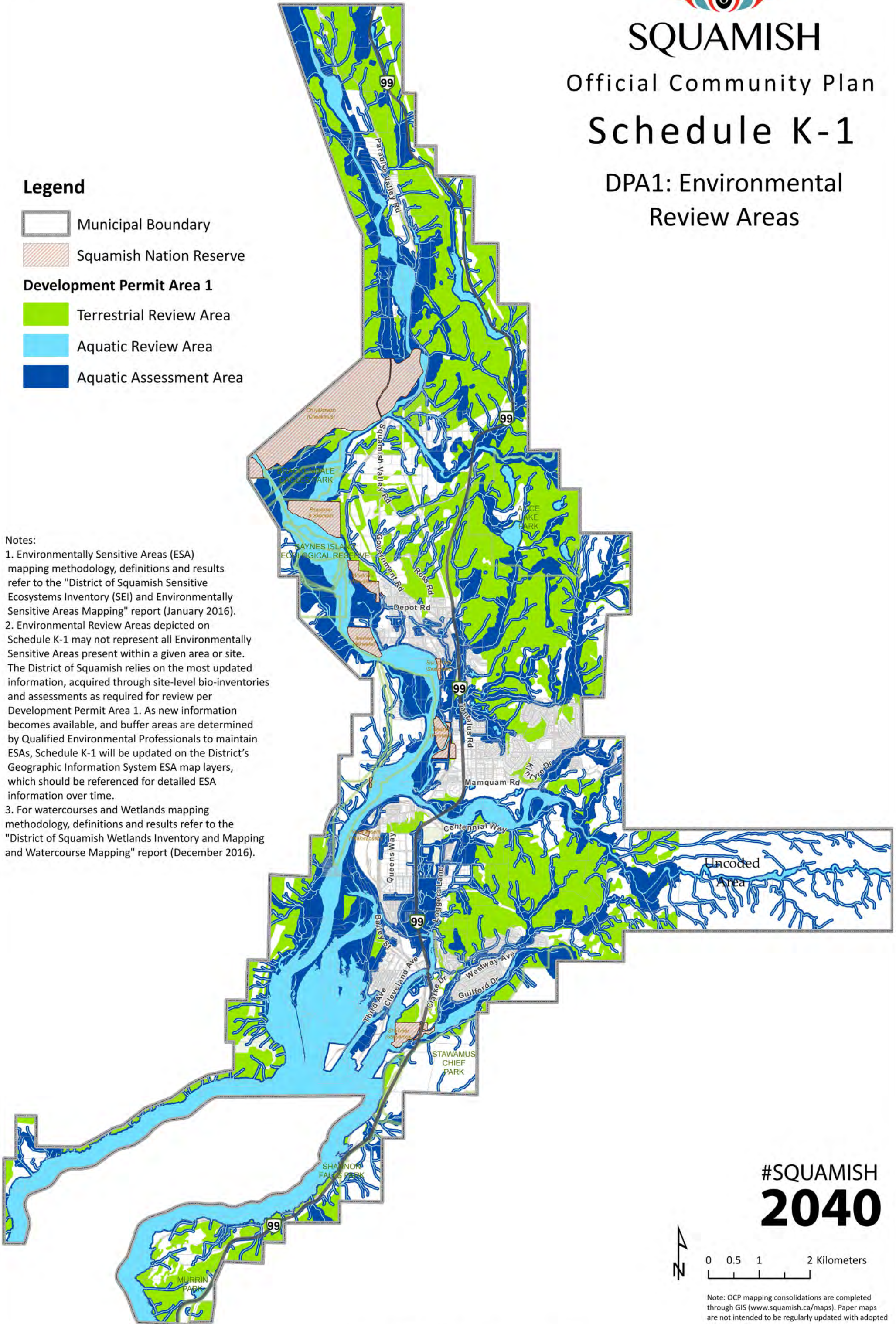
-  Municipal Boundary
-  Squamish Nation Reserve

#### Development Permit Area 1

-  Terrestrial Review Area
-  Aquatic Review Area
-  Aquatic Assessment Area

#### Notes:

1. Environmentally Sensitive Areas (ESA) mapping methodology, definitions and results refer to the "District of Squamish Sensitive Ecosystems Inventory (SEI) and Environmentally Sensitive Areas Mapping" report (January 2016).
2. Environmental Review Areas depicted on Schedule K-1 may not represent all Environmentally Sensitive Areas present within a given area or site. The District of Squamish relies on the most updated information, acquired through site-level bio-inventories and assessments as required for review per Development Permit Area 1. As new information becomes available, and buffer areas are determined by Qualified Environmental Professionals to maintain ESAs, Schedule K-1 will be updated on the District's Geographic Information System ESA map layers, which should be referenced for detailed ESA information over time.
3. For watercourses and Wetlands mapping methodology, definitions and results refer to the "District of Squamish Wetlands Inventory and Mapping and Watercourse Mapping" report (December 2016).



# #SQUAMISH 2040



0 0.5 1 2 Kilometers

Note: OCP mapping consolidations are completed through GIS ([www.squamish.ca/maps](http://www.squamish.ca/maps)). Paper maps are not intended to be regularly updated with adopted OCP amendments.

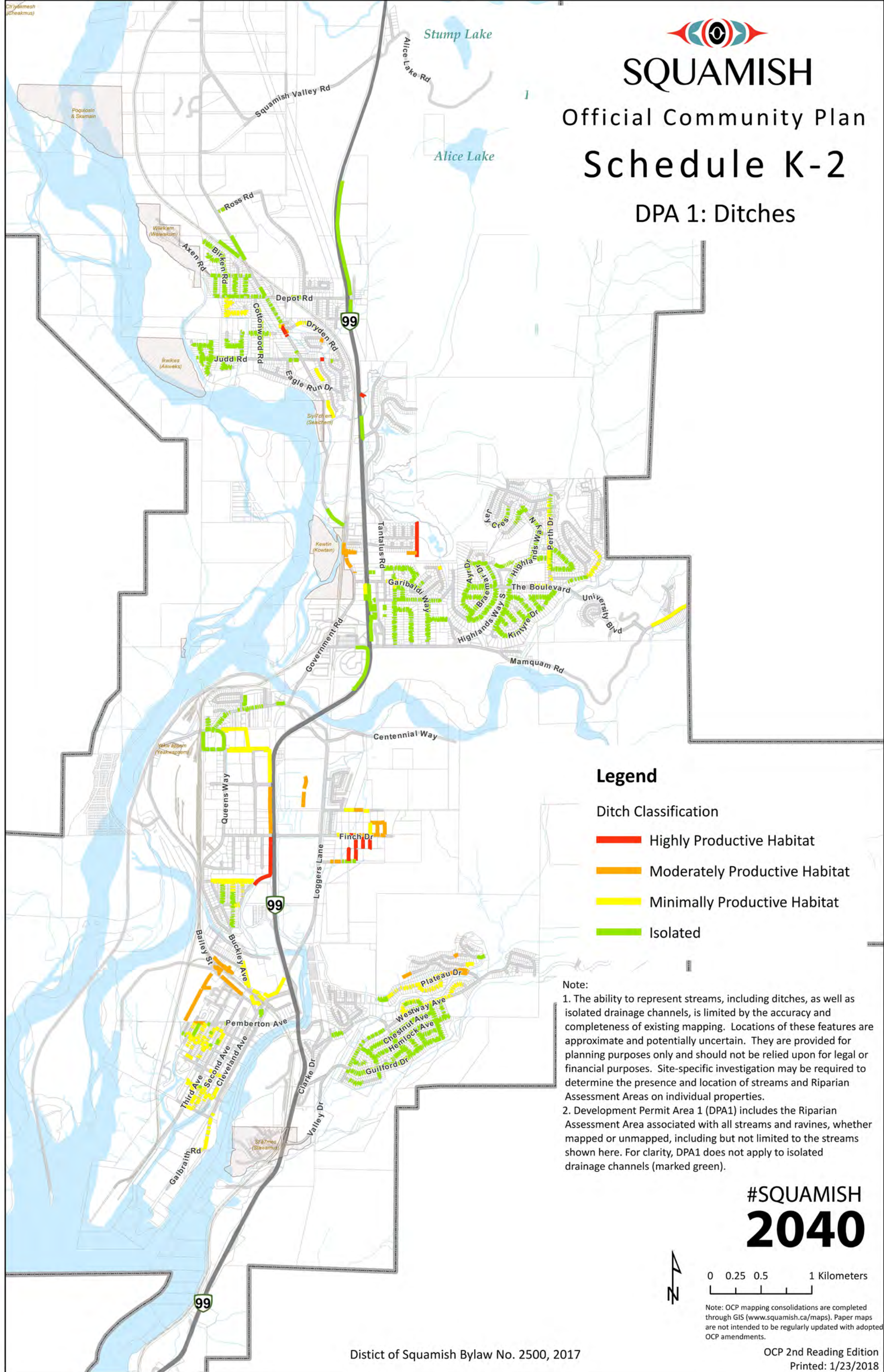


# SQUAMISH

## Official Community Plan

# Schedule K-2

## DPA 1: Ditches



### Legend

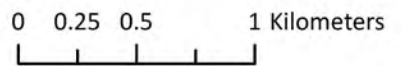
#### Ditch Classification

- █ Highly Productive Habitat
- █ Moderately Productive Habitat
- █ Minimally Productive Habitat
- █ Isolated

#### Note:

1. The ability to represent streams, including ditches, as well as isolated drainage channels, is limited by the accuracy and completeness of existing mapping. Locations of these features are approximate and potentially uncertain. They are provided for planning purposes only and should not be relied upon for legal or financial purposes. Site-specific investigation may be required to determine the presence and location of streams and Riparian Assessment Areas on individual properties.
2. Development Permit Area 1 (DPA1) includes the Riparian Assessment Area associated with all streams and ravines, whether mapped or unmapped, including but not limited to the streams shown here. For clarity, DPA1 does not apply to isolated drainage channels (marked green).

# #SQUAMISH 2040



Note: OCP mapping consolidations are completed through GIS ([www.squamish.ca/maps](http://www.squamish.ca/maps)). Paper maps are not intended to be regularly updated with adopted OCP amendments.



# SQUAMISH

Official Community Plan

## Schedule L

### DPA 2: Flood Hazard Development Permit Area

#### Legend

- Existing Dike
- Primary Floodway Model Boundary
- Proposed Sea Dike
- Debris Flow Hazard Area
- Flood Hazard Areas (includes Overland Flow Areas)
- Municipal Boundary
- Squamish Nation Reserve

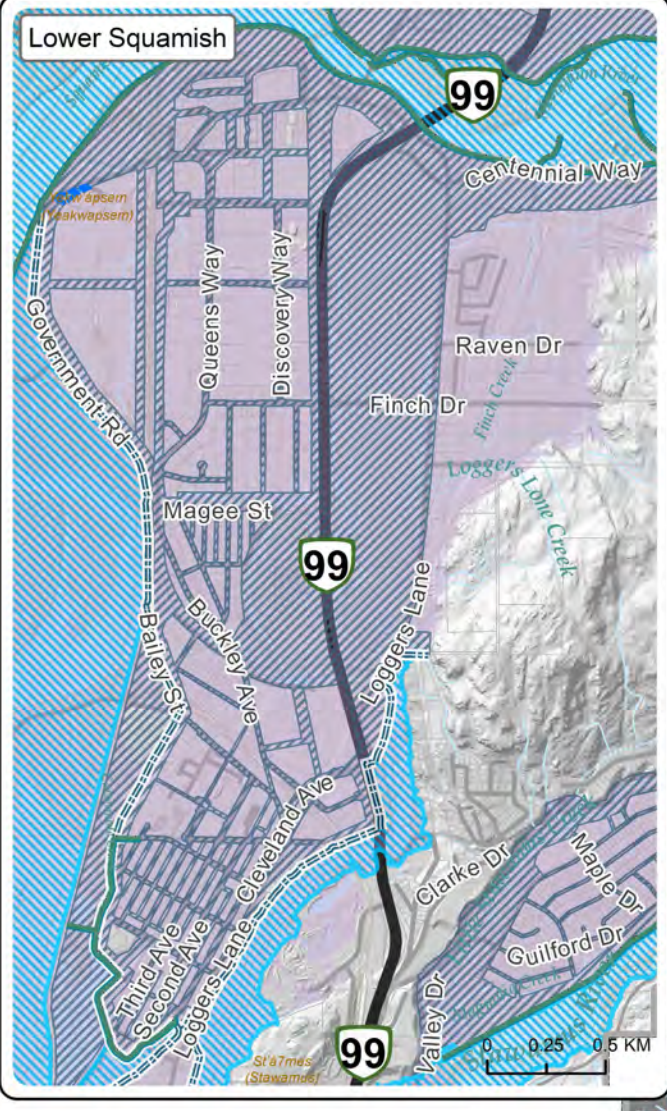
#### Development Permit Area 2

- Primary Floodway
- Secondary Floodway

Upstream limit of modelled floodplain

For Cheekeye Debris Flow Hazard Area please refer to Schedule D-1

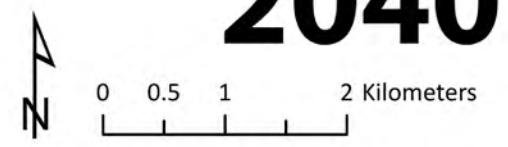
Upstream limit of modelled floodplain



Sea Dike Alignment in the vicinity of the Squamish Oceanfront peninsula to be determined by Special Study Area #2 (see Integrated Flood Hazard Management Plan)

- Note:
1. Creeks west of the Squamish River and creeks north of the Cheekeye River may be subject to debris flows but have not been mapped.
  2. Debris flow areas identified have been mapped based on a desktop review. A site-specific hazard assessment prepared in accordance with Provincial legislation may be required for specific development proposals at the discretion of the Building Inspector or Approving Officer in conjunction with specific land development applications.

# #SQUAMISH 2040



Note: OCP mapping consolidations are completed through GIS ([www.squamish.ca/maps](http://www.squamish.ca/maps)). Paper maps are not intended to be regularly updated with adopted OCP amendments.



# SQUAMISH

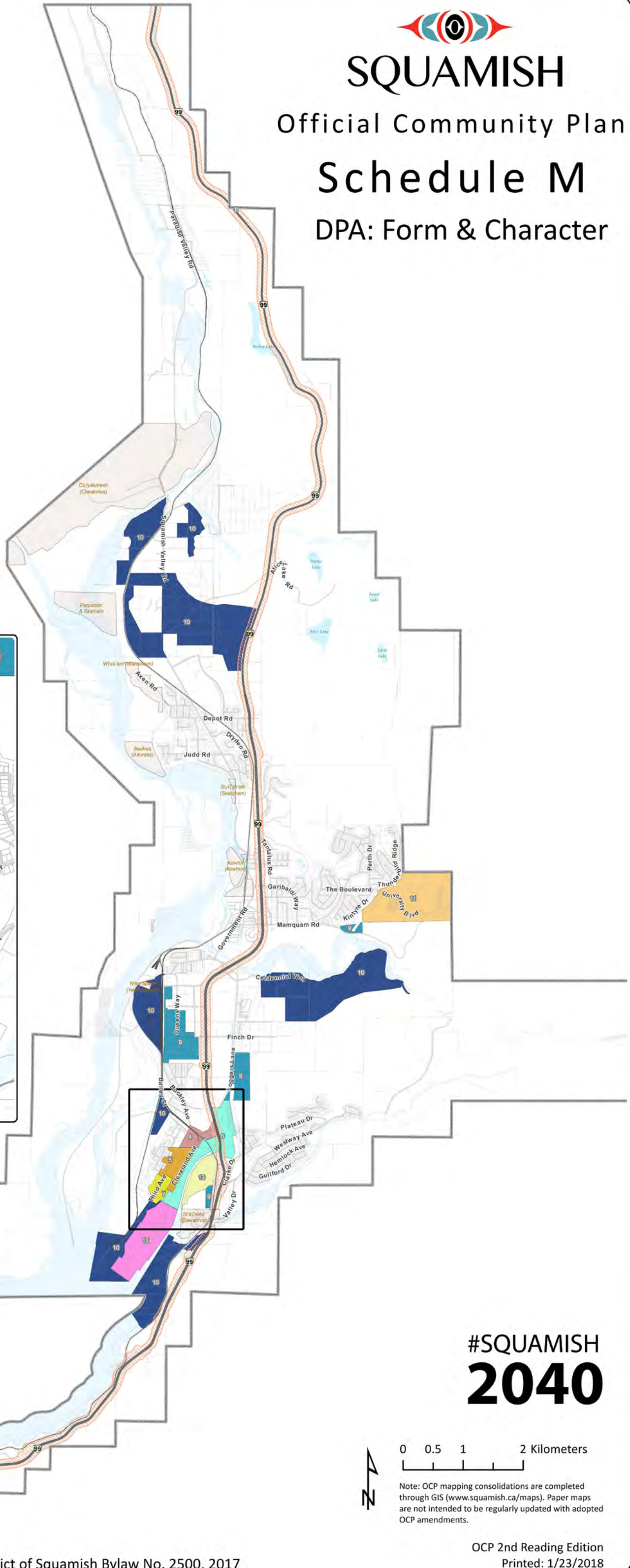
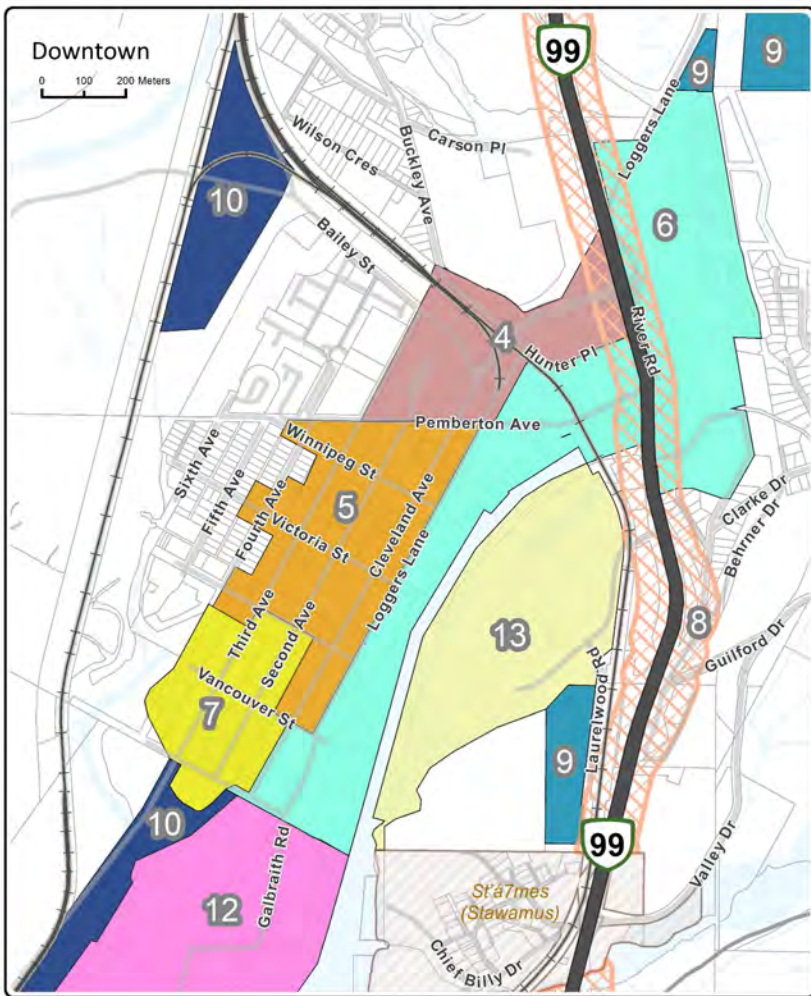
Official Community Plan

## Schedule M

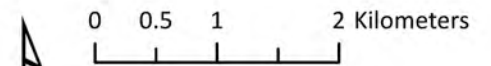
DPA: Form & Character

### Legend

- Municipal Boundary
- Squamish Nation Reserve
- Form & Character Development Permit Areas**
- 4 - Gateway
- 5 - Commercial Centre
- 6 - Mamquam Blind Channel
- 7 - Downtown South
- 8 - Highway 99 Corridor
- 9 - Industrial Employment
- 10 - Intensive and Restricted Industrial
- 11 - University Campus and Residential
- 12 - Oceanfront
- 13 - Waterfront Landing



# #SQUAMISH 2040



Note: OCP mapping consolidations are completed through GIS ([www.squamish.ca/maps](http://www.squamish.ca/maps)). Paper maps are not intended to be regularly updated with adopted OCP amendments.